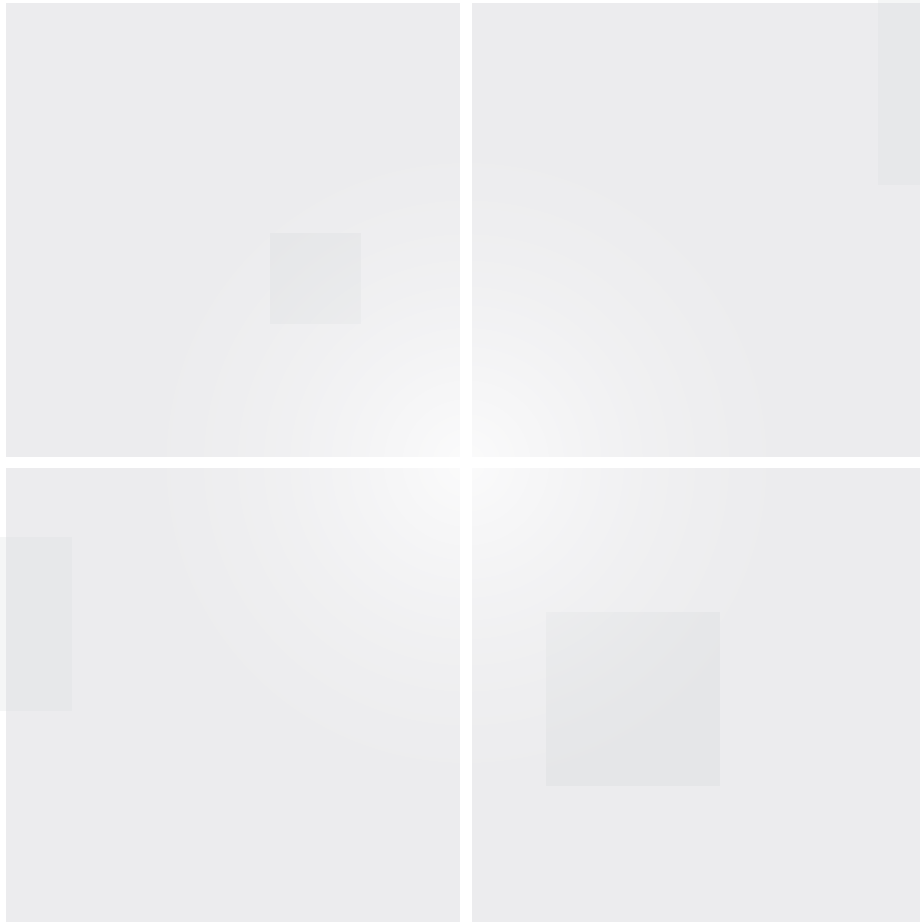


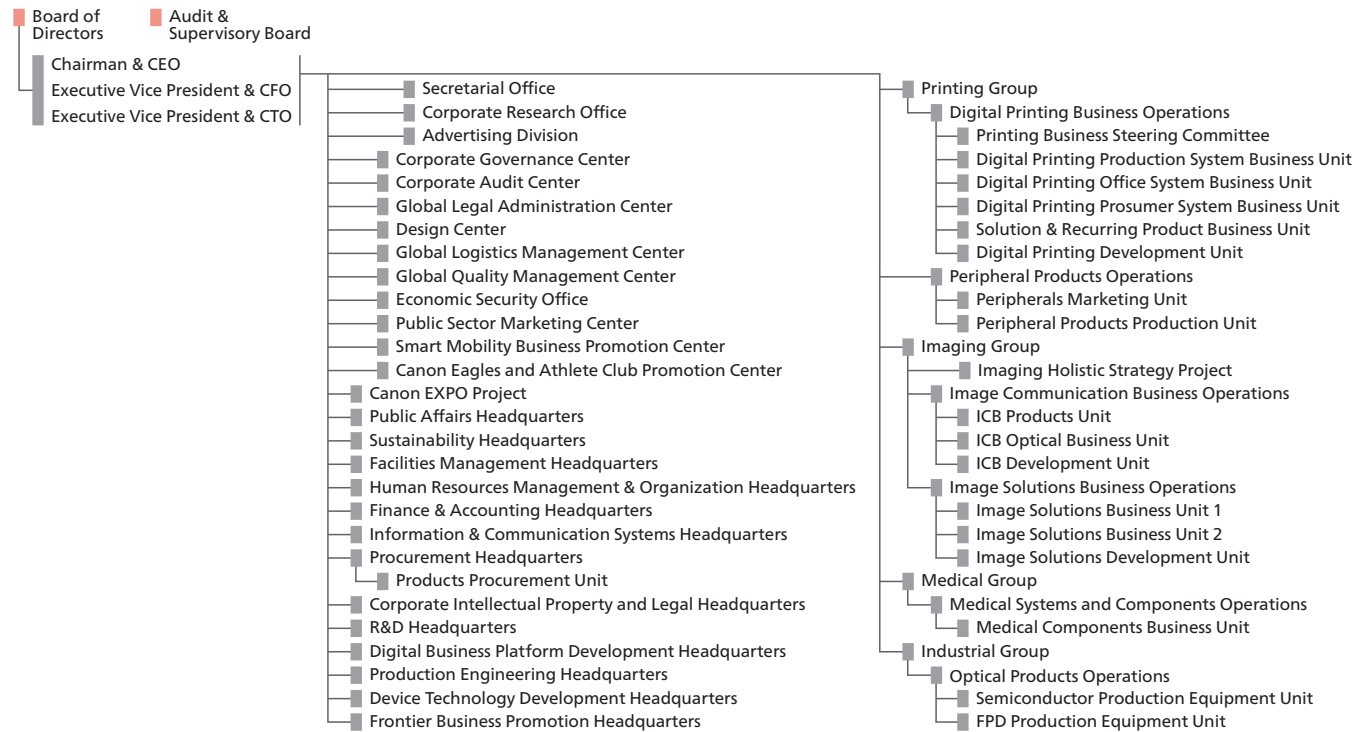
CANON FACT BOOK

2023/2024



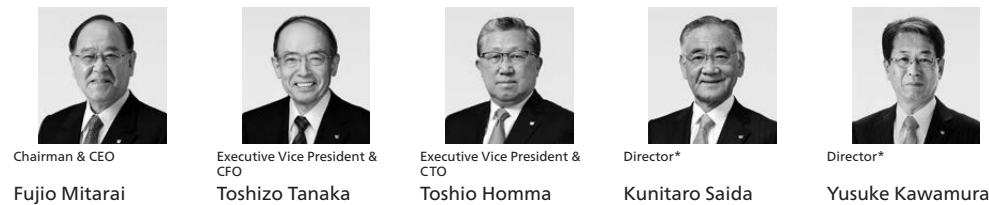
ORGANIZATION OF CANON INC. (As of July 1, 2023)

Corporate Organization



Board of Directors (As of July 1, 2023) *Outside

Directors



Chairman & CEO: Fujio Mitarai
Executive Vice President & CFO: Toshizo Tanaka
Executive Vice President & CTO: Toshio Homma
Director*: Kunitaro Saida
Director*: Yusuke Kawamura

Audit & Supervisory Board Members



Audit & Supervisory Board Members: Katsuhito Yanagibashi, Hideya Hatamochi, Yutaka Tanaka, Hiroshi Yoshida, Koichi Kashimoto

Executive Officers

Executive Vice President		Senior Managing Executive Officers				
Hideki Ozawa President & CEO, Canon (China) Co., Ltd.	Seymour Liebman Executive Vice President, Canon U.S.A., Inc.	Toshio Takiguchi Head of Medical Group President & CEO, Canon Medical Systems Corporation	Eiji Osanai Group Executive, Production Engineering Headquarters	Yuichi Ishizuka President & CEO, Canon Europe N.V. President & CEO, Canon Europe Ltd.	Kazuto Ogawa President & CEO, Canon U.S.A., Inc.	Takayuki Miyamoto Group Executive, Frontier Business Promotion Headquarters
Hiroaki Takeishi Head of Industrial Group Chairman & CEO, Canon Tokki Corporation	Masanori Yamada Head of Imaging Group	Katsumi Iijima Group Executive, Digital Business Platform Development Headquarters	Shunsuke Inoue Group Executive, R&D Headquarters	Soichi Hiramatsu Group Executive, Procurement Headquarters	Go Tokura Deputy Head of Imaging Group	Minoru Asada Group Executive, Finance & Accounting Headquarters
Managing Executive Officers						
Takashi Takeya Senior General Manager, Global Logistics Management Center Senior General Manager, Economic Security Office	Hisahiro Minokawa Group Executive, Human Resources Management & Organization Headquarters	Ritsuo Mashiko President, Oita Canon Inc.	Kazuhiko Nagashima Executive Vice President & CFO, Canon Europe Ltd.	Yoichi Iwabuchi Group Executive, Information & Communication Systems Headquarters	Takanobu Nakamasu President & CEO, Canon Production Printing Holding B.V.	Tamaki Hashimoto Unit Executive, Solution & Recurring Product Business Unit
Executive Officers						
Katsuhiko Shinjo Deputy Group Executive, R&D Headquarters	Masaki Omori President, Canon Machinery Inc.	Takeshi Ichikawa Group Executive, Device Technology Development Headquarters	Akiko Tanaka Deputy Group Executive, R&D Headquarters	Noriko Gunji Group Executive, Sustainability Headquarters	Hideki Sanatake Group Executive, Corporate Intellectual Property and Legal Headquarters	Hideto Kotani Unit Executive, Image Solutions Business Unit 1
Katsuyoshi Soma President, Fukushima Canon Inc.	Saijiro Endo Senior General Manager, Digital Printing Development Technology Planning & Management Center	Toshiyuki Matsuda Unit Executive, Peripherals Marketing Unit	Hiroto Okawara Senior General Manager, Smart Mobility Business Promotion Center	Yoshiyuki Koshimizu Senior General Manager, Digital Printing Business Planning & Management Center	Toshiyuki Ishii Executive Vice President, Canon (China) Co., Ltd.	Masahide Kinoshita Chief Executive, Peripheral Products Operations
Shunji Sawa Plant Manager, Toride Plant	Makoto Kambe Senior General Manager, Human Resources Management & Organization Center	Hiroto Fujimori Senior General Manager, Public Relations and IR Center	Isao Kobayashi President & CEO, Canon Canada Inc.	Katsuhito Sakurai Unit Executive, Device Development Unit		

GROUP DIRECTORY (As of March 31, 2023) *Numbers of employees were as of December 31, 2022.

Canon Inc.

Date of establishment	Number of employees	URL
August 1937	24,717	https://global.canon
Operations	Address	
Headquarters	30-2, Shimomaruko 3-chome, Ohta-ku, Tokyo 146-8501, Japan	
Yako Office	3-451, Tsukagoshi, Saiwai-ku, Kawasaki, Kanagawa 212-8530, Japan	
Kawasaki Office	70-1, Yanagicho, Saiwai-ku, Kawasaki, Kanagawa 212-8602, Japan	
Tamagawa Office	16-1, Shimonoge 3-chome, Takatsu-ku, Kawasaki, Kanagawa 213-8512, Japan	
Kosugi Office	9-1, Imaikami-cho, Nakahara-ku, Kawasaki, Kanagawa 211-8501, Japan	
Hiratsuka Plant	22-5, Tamura 9-chome, Hiratsuka, Kanagawa 254-0013, Japan	
Hiratsuka Second Plant	3072, Okami, Hiratsuka-city, Kanagawa 254-0012, Japan	
Ayase Plant	2596, Yoshioka, Ayase, Kanagawa 252-1124, Japan	
Fuji-Susono Research Park	4202, Fukara, Susono, Shizuoka 410-1196, Japan	
Utsunomiya Office	Utsunomiya Plant	19-1, Kiyoharakogyodanchi, Utsunomiya, Tochigi 321-3293, Japan
	Utsunomiya Optical Products Plant	20-2, Kiyoharakogyodanchi, Utsunomiya, Tochigi 321-3292, Japan
	Optics R&D Center	23-10, Kiyoharakogyodanchi, Utsunomiya, Tochigi 321-3298, Japan

Operations	Address
Otawara Office	1385, Shimoishigami, Otawara, Tochigi 324-8550, Japan
Toride Plant	5-1, Hakusan 7-chome, Toride, Ibaraki 302-8501, Japan
Ami Plant	3577, Yoshiwara, Ohaza, Ami-machi, Inashiki-gun, Ibaraki 300-1195, Japan
Oita Plant	993-1, Nyu, Oita, Oita 870-0318, Japan
Canon Global Management Institute	2-14, Nakane 2-chome, Meguro-ku, Tokyo 152-0031, Japan
Oita Manufacturing Training Center	1867-1, Tsunokobaru, Oita, Oita 870-0271, Japan
Bando Logistics Center	1234, Matate, Bando, Ibaraki 306-0605, Japan

Manufacturing Subsidiaries and Affiliates

Company name	Location	Est.	Emp.
JAPAN			
Canon Electronics Inc.	Saitama	1954	1,788
Canon Precision Inc.	Aomori	1952	1,857
Canon Chemicals Inc.	Ibaraki	1950	1,466
Oita Canon Inc.	Oita	1982	2,935
Canon Finetech Nisca Inc.	Saitama	1953	1,478
Canon Components, Inc.	Saitama	1984	1,020
Nagahama Canon Inc.	Shiga	1988	1,064
Canon Optron, Inc.	Ibaraki	1974	159
Oita Canon Materials Inc.	Oita	1998	1,502
Ueno Canon Materials Inc.	Mie	2002	404
Fukushima Canon Inc.	Fukushima	2003	1,595
Canon Semiconductor Equipment Inc.	Ibaraki	1917	582
Canon Ecology Industry Inc.	Ibaraki	2004	492
Canon Mold Co., Ltd.	Ibaraki	1972	510
Canon Tokki Corporation	Niigata	1967	647
Nagasaki Canon Inc.	Nagasaki	2008	771
Canon ANELVA Corporation	Kanagawa	1967	1,062
Canon Machinery Inc.	Shiga	1972	730
Canon Wind Inc.	Oita	2008	32
Top Business Machines Co., Ltd.	Shiga	1966	45
Canon Medical Systems Corporation	Tochigi	1948	5,508
OHARA Inc.*1	Kanagawa	1941	461*2
Miyazaki Canon Inc.	Miyazaki	1980	963
Canon Electron Tubes & Devices Co., Ltd.	Tochigi	2003	508
Fukui Canon Materials Inc.	Fukui	2017	148
AMERICAS			
Canon Virginia, Inc.	U.S.A. / Virginia	1985	971

Company name	Location	Est.	Emp.
Canon Environmental Technologies, Inc.	U.S.A. / Virginia	1996	107
Redlen Technologies Inc.	Canada / British Columbia	1999	200
EUROPE			
Canon Giessen GmbH	Germany / Giessen	1972	315
Canon Bretagne S.A.S.	France / Liffre	1983	558
Canon Production Printing Netherlands B.V.	The Netherlands / Venlo	1954	1,814
Canon Production Printing Germany GmbH & Co. KG	Germany / Poing	1989	902
Axis Communications AB	Sweden / Lund	1984	2,560
Edale Ltd.	U.K. / Fareham	1972	84
ASIA			
Canon Dalian Business Machines, Inc.	PRC / Liaoning	1989	1,271
Canon Zhongshan Business Machines Co., Ltd.	PRC / Guangdong	2001	3,262
Canon (Suzhou) Inc.	PRC / Jiangsu	2001	3,596
Canon Machinery (Dalian) Co., Ltd.	PRC / Liaoning	2003	62
Canon Finetech Nisca (Shenzhen) Inc.	PRC / Guangdong	1993	497
Canon Inc., Taiwan	Taiwan	1970	4,279
Canon Electronic Business Machines (H.K.) Co., Ltd.	Hong Kong	1991	71
Canon Opto (Malaysia) Sdn. Bhd.	Malaysia / Selangor	1988	1,468
Canon Electronics (Malaysia) Sdn. Bhd.	Malaysia / Penang	1988	754
Canon Machinery (Malaysia) Sdn. Bhd.	Malaysia / Selangor	1995	186
Canon Hi-Tech (Thailand) Ltd.	Thailand / Ayutthaya	1990	9,036
Canon Prachinburi (Thailand) Ltd.	Thailand / Prachinburi	2011	7,180
Canon Business Machines (Philippines), Inc.	Philippines / Batangas	2011	3,934
Canon Vietnam Co., Ltd.	Vietnam / Hanoi	2001	22,254
Canon Electronics Vietnam Co., Ltd.	Vietnam / Hung Yen	2008	3,476

R&D, Software Subsidiaries and Affiliates

Company name	Location	Est.	Emp.
JAPAN			
Canon Imaging Systems Inc.	Niigata	1990	474
Canon IT Solutions Inc.	Tokyo	1982	3,778
Canon Esquisse System Inc.	Tokyo	1994	13
Canon Electronics Technology Inc.	Tokyo	1970	423
AMERICAS			
Canon Nanotechnologies, Inc.	U.S.A. / Texas	2001	96
Arcules Inc.	U.S.A. / California	2017	93
EUROPE			
Canon Research Centre France S.A.S.	France / Ille-et-Vilaine	1990	47
Canon Ophthalmic Technologies Sp. z o. o.	Poland / Wroclaw	1992	29
NT-ware Systemprogrammierungs-GmbH	Germany / Bad Iburg	1998	118

Company name	Location	Est.	Emp.
MIDDLE EAST / AFRICA			
BriefCam Ltd.	Israel / Modi'in	2007	103
ASIA			
Canon Innovative Solution (Beijing) Co., Ltd.	PRC / Beijing	1998	53
Canon (Suzhou) System Software Inc.	PRC / Jiangsu	2002	105

*1 Subsidiaries and affiliates accounted for by the equity method *2 As of October 31, 2022

Marketing Subsidiaries and Affiliates

Company name	Location	Est.	Emp.
JAPAN			
Canon Marketing Japan Inc.	Tokyo	1968	4,654
Canon System & Support Inc.	Tokyo	1980	4,632
A&A Co., Ltd.	Tokyo	1984	69
Canon Production Printing Systems Inc.	Tokyo	2014	379
Canon MEDTech Supply Corp.	Kanagawa	1956	244
Canon Electronics Business Systems Inc.	Saitama	1984	28
Ibaraki Marketing Systems Co., Ltd.	Ibaraki	2013	14
AMERICAS			
Canon U.S.A., Inc.	U.S.A. / New York	1965	1,773
Canon Solutions America, Inc.	U.S.A. / New York	2013	3,914
Canon Financial Services, Inc.	U.S.A. / New Jersey	1979	289
Canon Business Process Services	U.S.A. / New York	2013	3,164
Canon Canada Inc.	Canada / Ontario	1972	836
Canon Panama, S.A.	Panama / Panama City	1968	120
Canon do Brasil Indústria e Comércio Ltda.	Brazil / São Paulo	1974	251
Canon Chile S.A.	Chile / Santiago	1994	130
Canon Mexicana, S. de R.L. de C.V.	Mexico / Mexico City	1978	309
Canon Medical Systems USA, Inc.	U.S.A. / California	1989	1,139
Axis Communications Inc.	U.S.A. / Massachusetts	1988	500
Canon Healthcare USA, Inc.	U.S.A. / Ohio	2023	—
EUROPE			
Canon Europe Ltd.	U.K. / London	2000	704
Canon Europa N.V.	The Netherlands / Amstelveen	1982	543
Canon (UK) Ltd.	U.K. / London	1976	1,285
Canon (Ireland) Business Equipment Ltd.	Ireland / Dublin	1987	64
Canon France S.A.S.	France / Paris	1975	971
Canon Deutschland GmbH	Germany / Krefeld	1973	1,352
Canon Italia S.p.A.	Italy / Milano	1972	416
Canon Nederland N.V.	The Netherlands / 's-Hertogenbosch	1994	876
Canon Belgium N.V./S.A.	Belgium / Diegem	1978	460
Canon Luxembourg S.A.	Luxembourg	1979	44
Canon Austria GmbH	Austria / Vienna	1975	349
Canon CEE GmbH	Austria / Vienna	1994	101
Canon (Schweiz) AG	Switzerland / Wallisellen	1951	507
Canon Hungaria Kereskedelmi Kft.	Hungary / Budapest	1994	126
Canon Polska Sp. z o. o.	Poland / Warsaw	1994	232
Canon CZ spol.s.r.o.	Czech Republic / Prague	1994	220
Canon Slovakia s.r.o.	Slovakia / Bratislava	2000	19
Canon Danmark A/S	Denmark / Copenhagen	1999	211
Canon Norge AS	Norway / Oslo	1967	251
Canon Svenska AB	Sweden / Stockholm	1970	268
Canon Oy	Finland / Helsinki	1941	263
Canon ADRIA d.o.o.	Slovenia / Ljubljana	2006	12
Canon Bulgaria EOOD	Bulgaria / Sofia	2001	8
Canon Croatia d.o.o.	Croatia / Zagreb	2013	5
Canon Ukraine LLC	Ukraine / Kiev	2012	16
Canon Ru LLC	Russia / Moscow	2004	47
Canon España S.A.	Spain / Madrid	1974	865
Canon Portugal S.A.	Portugal / Lisbon	2007	115
Milestone Systems A/S	Denmark / Copenhagen	1998	589
Canon Medical Systems Europe B.V.	The Netherlands / Zoetermeer	1981	271
MIDDLE EAST / AFRICA			
Canon Eurasia A.S.	Turkey / Istanbul	2007	119
Canon Middle East FZ-LLC	U.A.E. / Dubai	2001	212
Canon Emirates LLC	U.A.E. / Dubai	2007	107
Canon Office Imaging Solutions (Doha) LLC	Qatar / Doha	2014	36
Canon South Africa (Pty) Ltd.	South Africa / Johannesburg	1999	143
Canon Kenya Ltd.	Kenya / Nairobi	2013	13
Canon Nigeria Imaging Solutions Ltd.	Nigeria / Lagos	2016	14
Canon Saudi Arabia LLC	Saudi Arabia / Riyadh	2018	73
Canon Israel Imaging and Business Solutions Ltd.	Israel / Rehovot	2017	7

Company name	Location	Est.	Emp.
ASIA			
Canon (China) Co., Ltd.	PRC / Beijing	1997	1,220
Canon Hongkong Co., Ltd.	Hong Kong	1979	453
Canon Marketing (Taiwan) Co., Ltd.	Taiwan	2001	152
Canon Singapore Pte. Ltd.	Singapore	1979	765
Canon Marketing (Malaysia) Sdn. Bhd.	Malaysia / Selangor	1986	504
Canon Marketing (Thailand) Co., Ltd.	Thailand / Bangkok	1994	590
Canon Marketing (Philippines), Inc.	Philippines / Taguig City	1996	262
Canon India Pvt. Ltd.	India / New Delhi	1996	940
Canon Marketing Vietnam Co., Ltd.	Vietnam / Ho Chi Minh	2012	9
Canon Semiconductor Engineering Korea Inc.	ROK / Seoul	1993	522
Canon Optical Industrial Equipment (Shanghai) Inc.	PRC / Shanghai	2002	663
Canon Semiconductor Equipment Taiwan, Inc.	Taiwan	1997	479
Canon Korea Inc.*1	ROK / Seoul	1985	1,180
Canon Medical Systems (China) Co., Ltd.	PRC / Beijing	2007	745
OCEANIA			
Canon Australia Pty. Ltd.	Australia / Sydney	1978	510
Canon New Zealand Ltd.	New Zealand / Auckland	1989	374
Canon Business Services Australia Pty Ltd.	Australia / Sydney	1994	569
Satalyst Pty Ltd.	Australia / Perth	2005	32

Other Related Companies

Company name	Location	Est.	Emp.
JAPAN			
Canon Technical Information Services Inc.	Tokyo	2003	82
Canon Customer Support Inc.	Chiba	1996	804
Canon Business Support Inc.	Tokyo	1997	612
Canon BizAttenda Inc.	Tokyo	1985	282
Canon ITS Medical Inc.	Tokyo	1972	191
QB5 Inc.	Tokyo	2001	52
Canon Medical Finance Co., Ltd.	Tokyo	1970	49
SPACE ONE Co., Ltd.*2	Tokyo	2017	52
AMERICAS			
Canon Information Technology Services, Inc.	U.S.A. / Virginia	1998	292
EUROPE			
I.R.I.S. Group SA	Belgium / Louvain-la-Neuve	1987	161*3
ASIA			
Canon Engineering Hong Kong Co., Ltd.	Hong Kong	1994	86
Canon MailCom Malaysia Sdn. Bhd.	Malaysia / Selangor	1982	154
OCEANIA			
Canon Finance Australia Ltd.	Australia / Sydney	1988	12

*1 Subsidiaries and affiliates accounted for by the equity method
 *2 Affiliate company accounted for by the equity method of Canon Electronics Inc.
 *3 Total number of employees in the entire Group

YESTERDAY AND TODAY

● History of business ● History of products

1930s – 1940s
Aiming to develop the world's best cameras

- 1933 ● Canon's predecessor, Precision Optical Instruments Laboratory, is founded in Roppongi, Minato-ku, Tokyo, to conduct research into quality cameras.
- 1934 ● The Kwanon, Japan's first 35 mm focal-plane-shutter camera, is produced in prototype form.
- 1935 ● The company files for registration of the "Canon" trademark.
- 1936 ● The Hansa Canon, a 35 mm focal-plane-shutter camera, is introduced.
- 1937 ● Precision Optical Industry, Co., Ltd. is founded.
- 1939 ● In-house production of Serenar Lens commences.
- 1940 ● Japan's first indirect X-ray camera is developed.
- 1942 ● Takeshi Mitarai is appointed president of Precision Optical Industry, Co., Ltd.
- 1945 ● Production commences for the midrange J II focal-plane-shutter camera.
- 1946 ● The Ginza Camera Service Station opens.
 - The Canon S II is introduced, receiving great acclaim from ranking officers in the Occupation Forces and foreign buyers in Japan.
- 1947 ● The company becomes Canon Camera Co., Inc.
 - Government designates Canon cameras priority exports when Japan resumes export activities.
- 1949 ● Canon shares are listed on the Tokyo Stock Exchange for the first time when postwar stock trading resumes.
 - Canon II B wins first prize at a U.S. national camera exhibition.



KWANON



Hansa Canon



Indirect X-ray camera



Takeshi Mitarai

1950s – 1960s
Undertaking the challenges of globalization and diversification

- 1951 ● Canon concentrates head office and manufacturing plants in Shimomaruko, Ohta-ku, Tokyo.
- 1952 ● Canon introduces the world's first speedlight-compatible 35 mm camera IV Sb.
- 1955 ● Canon's New York branch office is opened.
- 1956 ● Canon launches the 8 mm movie camera 8T.
- 1957 ● Canon Europa, the sole European distributor, is established in Switzerland.
 - The still camera L1 and 8 mm movie camera 8T are selected as Japan's first Good Design products.
- 1958 ● Canon launches a field zoom broadcast lens.
- 1961 ● "Electric-eye" boom is sparked by the introduction of the Canonet.
- 1962 ● Canon develops its first five-year plan in preparation for full-fledged entry into the business machine market.
 - Canon Latin America, the company's sole distributor for Latin America, is established in Panama.
- 1963 ● Canon SA Geneva (Switzerland) is established. By abolishing the sole-distributor system, Canon moves to a new sales system, with outlets under the direct control of the headquarters in Tokyo.
- 1964 ● The Canola 130, the world's first 10-key electronic calculator, is introduced.
- 1965 ● Canon U.S.A., Inc. is established.
- 1967 ● The 30th anniversary slogan—"Cameras in the Right Hand, Business Machines in the Left"—is announced.
 - Canon Latin America, Inc. is established.
- 1968 ● Canon Business Machines Sales, Inc. (now Canon Marketing Japan) is established in Japan.
 - Canon Amsterdam N.V. (now Canon Europa N.V.) is established.
 - The Canon NP System, proprietary electro-photography technology, is introduced and Canon enters the plain-paper copier market.



Factory at Shimomaruko Headquarters



Opening of New York office



8T



Canonet



Canola 130

- 1969 ● The company's name is changed to Canon Inc.
 - Canon Camera Sales Co., Inc. is founded for Japanese marketing.
 - The world's first lens employing fluorite is introduced.



NP-1100

1970s
Diversification and launch of the first Premier Company Plan

- 1970 ● Canon Inc., Taiwan, Canon's first manufacturing facility outside of Japan, is established.
 - Canon enters the personal calculator market.
 - The NP-1100, Japan's first PPC, is introduced.
 - The PPC-1, Japan's first mask aligner, is introduced.
- 1971 ● Canon Business Machines Sales, Inc. and Canon Camera Sales Co., Ltd. merge to form Canon Sales Co., Inc.
 - The top-of-the-line SLR camera Canon F-1 and FD lens are introduced.
- 1972 ● Physotec GmbH (now Canon Giessen GmbH), Canon's first European manufacturing site, is established in Germany.
 - The NP-70, the world's first PPC with the liquid-dry system, is introduced.
- 1973 ● Canon Deutschland GmbH is established.
 - Japan's first full-color PPC is introduced.
 - A macro zoom lens for cinematography wins an Academy Award in the science and technology category from the U.S. Academy of Motion Picture Arts and Sciences.
- 1974 ● Takeo Maeda is appointed president of Canon Inc.
- 1975 ● Canon France S.A.S. is established.
 - Canon develops a laser printer.
- 1976 ● The first Premier Company Plan is launched. A committee is established to discuss Canon development, production and sales systems.
 - Canon (U.K.) Ltd. is established.
 - The AE-1 SLR camera with a built-in micro-computer is introduced, triggering an AE boom.
 - The CR-45NM, the world's first nonmydriatic retinal camera, is introduced.
- 1977 ● Ryuzaburo Kaku is appointed president of Canon Inc.
 - The K-35 series of lenses for cinematography wins an Academy Award from the U.S. Academy of Motion Picture Arts and Sciences.
- 1978 ● A product-specific business division structure is introduced.
 - Canon Australia Pty. Ltd. is established.
 - The NP-8500, the world's first retention-type copying machine, is introduced.
 - The PLA-500FA, the world's first mask aligner with a laser-based automatic alignment system, is introduced.
- 1979 ● Canon Singapore Pte. Ltd. is established.
 - Overseas sales exceed ¥100 billion for the first time.
 - The LBP-10, using a semiconductor laser, is introduced.



PPC-1



Takeo Maeda



AE-1



Ryuzaburo Kaku



LBP-10

1980s
Canon's second inauguration and introduction of the kyosei philosophy

- 1980 ● The Canoword 55, Japan's first word processor featuring Roman alphabet input, is introduced.
- 1981 ● The professional SLR system New F-1 is launched.
- 1982 ● The Second Premier Company Plan is launched.
 - The PC-10 and PC-20, the world's first personal copying machines with replaceable cartridges, are introduced.
- 1983 ● Canon Bretagne S.A.S. is established in France.
- 1984 ● Canon starts OEM supply of laser printers to Hewlett-Packard Co. (U.S.A.).
 - World's smallest and lightest laser beam printer, the LBP-8/CX, is launched.
- 1985 ● Canon Virginia, Inc. (U.S.A.) is established.



PC-10



LBP-8/CX

- The BJ-80, the world's first inkjet printer using Bubble Jet technology, is introduced.
- 1987 ● World's first digital full-color copying machine, the CLC-1, is introduced.
- The EOS autofocus SLR camera is introduced along with a range of EF lenses.
- 1988 ● Canon announces its second inauguration with the launch of the First Global Corporation Plan, which introduces the corporate philosophy of *kyosei*.
- Canon Opto (Malaysia) Sdn. Bhd. is established.
- 1989 ● Keizo Yamaji is appointed president of Canon Inc.
- Canon Dalian Business Machines, Inc. is established in the PRC.



BJ-80



EOS 650

1990s
Launch of the Excellent Global Corporation Plan

- 1990 ● Canon launches its toner cartridge recycling system.
- Canon Information Systems R&D Europe Ltd. (now Canon Research Centre France S.A.S.) is established.
- Canon Hi-Tech (Thailand) Ltd. is established.
- 1993 ● Hajime Mitarai is appointed president of Canon Inc.
- The Second Global Corporation Plan is initiated.
- Canon Group Environmental Charter is established.
- 1994 ● The Japan Institute of Invention and Innovation rewards Canon with the Imperial Award for Innovations for its Bubble Jet printing system.
- 1995 ● Fujio Mitarai is appointed president of Canon Inc.
- 1996 ● The Excellent Global Corporation Plan is initiated.
- The ELPH (IXUS in other regions), a 2x zoom compact camera with the Advanced Photo System, is introduced.
- 1997 ● Canon (China) Co., Ltd. is established.
- 1998 ● Canon forms the Management Reformation Committee.
- Canon commences Group-wide production reform activities.
- Copying machine remanufacturing commences in Japan. Canon thus maintains such operations in Europe, the U.S. and Japan.
- Canon Middle East B.V. is established in the U.A.E.



Keizo Yamaji



Hajime Mitarai



Fujio Mitarai

2000s
Pursuing digitization and No. 1 share in all major businesses

- 2000 ● Canon Inc. begins listing its American Depositary Receipts on the New York Stock Exchange (NYSE). (Delisted in March 2023)
- The PowerShot S100 DIGITAL ELPH (DIGITAL IXUS in other regions), a digital compact camera, is introduced.
- The iR series new-generation network MFD is introduced, providing document collation and distribution functions.
- 2001 ● Canon Europe Ltd. (U.K.) is established as the strategic headquarters for Europe.
- Canon Vietnam Co., Ltd. is established.
- 2002 ● Canon Inc.'s new headquarters building opens in Shimomaruko, Tokyo.
- The EOS-1Ds pro-model digital SLR camera is introduced.
- 2003 ● The EOS Kiss Digital (EOS 300D Digital and EOS Digital Rebel in other regions) entry-level digital AF SLR camera is introduced.
- 2004 ● Canon Ru LLC is established in Moscow, Russia.
- Igari Mold (now Canon Mold) becomes a wholly owned subsidiary.
- 2005 ● The Compliance Card is distributed to 110,000 Canon Group employees.
- ANELVA Corporation (now Canon ANELVA) is made a consolidated subsidiary.
- NEC Machinery Corporation (now Canon Machinery) is made a consolidated subsidiary.



ELPH / IXUS



Joining the NYSE



PowerShot S100 DIGITAL ELPH / DIGITAL IXUS



EOS DIGITAL REBEL / EOS 300D DIGITAL

- 2006 ● Canon receives the Imperial Award for Innovations for the invention of a large-screen sensor for real-time X-ray imaging systems.
- Canon Inc. appoints Fujio Mitarai as chairman and CEO, Tsuneji Uchida as president and COO.
- Chairman Fujio Mitarai is appointed the second chairman of the Japan Business Federation.
- Canon Sales Co., Inc. changes its name to Canon Marketing Japan Inc.
- 2007 ● Tokki (now Canon Tokki) becomes a consolidated subsidiary.
- Canon and the Kyoto Culture Association start the Tsuzuri Project to pass on Japanese cultural assets to future generations.
- Canon makes a full-scale entry into the commercial digital printer market by introducing the imagePRESS C7000VP.
- 2008 ● The Canon Institute for Global Studies and the Canon Foundation are established.
- The EOS 5D Mark II, the first camera ever to incorporate full HD video, is introduced.
- 2009 ● All headquarters functions of Canon Europe are consolidated in London.
- The imageRUNNER ADVANCE series of next-generation office network MFPs with enhanced IT environment integration is introduced.



Fujio Mitarai



Tsuneji Uchida



imagePRESS C7000VP



EOS 5D Mark II



imageRUNNER ADVANCE C5051



Cinema EOS System



Fujio Mitarai



Subaru Telescope



EOS M



DP-V3010

2010s
Challenge of growth and diversification in current businesses

- 2010 ● Océ (now Canon Production Printing) becomes a consolidated subsidiary.
- Fujio Mitarai is appointed president of the Rugby World Cup 2019 Organising Committee.
- 2011 ● Canon Prachinburi (Thailand) Ltd. is established.
- Canon Business Machines (Philippines), Inc. is established.
- Canon enters the motion picture production industry with the launch of the Cinema EOS System of cinema cameras and lenses.
- 2012 ● Fujio Mitarai is appointed president, in addition to chairman and CEO, of Canon Inc.
- The Subaru Telescope at the NAOJ Hawaii Observatory is equipped with a prime focus camera and lens unit enabling a wider field of view.
- Canon enters into collaborative research agreements with Massachusetts General Hospital and Brigham and Women's Hospital.
- The compact and lightweight mirrorless camera EOS M is introduced.
- Canon receives a Technology & Engineering Emmy® Award for improvements to large-format CMOS imagers for use in high-definition broadcast video cameras at the 64th Annual Technology & Engineering Emmy® Awards.
- 2013 ● Chairman Fujio Mitarai receives the Grand Cordon of the Order of the Rising Sun from the Emperor of Japan.
- Canon Solutions America, Inc. is established.
- Canon enters the 4K video production display market with the launch of the DP-V3010 30-inch 4K display for professional use.
- 2014 ● Fujio Mitarai is appointed Honorary President of the Tokyo 2020 Organising Committee of the Olympic and Paralympic Games.
- Canon makes Molecular Imprints, Inc. of U.S.A. (now Canon Nanotechnologies America) a wholly owned subsidiary.
- Canon Europe makes Milestone Systems (Denmark) a wholly owned subsidiary.

- 2015 ● Canon enters the machine vision market with the launch of the RV1100 3D Machine Vision System.
- Canon makes Axis Communications (Sweden) a consolidated subsidiary.
- 2016 ● Canon Inc. appoints Fujio Mitarai as chairman and CEO, and Masaya Maeda as president and COO.
- Toshiba Medical Systems (now Canon Medical Systems) becomes a wholly owned subsidiary.
- Co-development with Axis of the AXIS Q1659 interchangeable-lens network camera.
- 2017 ● Customer Experience Center Tokyo, a facility for experiencing Canon's commercial printing solutions, opens at Canon headquarters.
- Canon makes Miyazaki Daishin Canon Inc. (now Miyazaki Canon) a wholly owned subsidiary.
- Canon Electronics succeeds in launching the CE-SAT-I micro satellite.
- Canon delivers the nanoimprint lithography system FPA-1200NZ2C to Toshiba Memory Corporation's (now Kioxia) Yokkaichi Operations plant.
- Canon develops the Free Viewpoint Video System.
- The Colorado 1640 UVgel wide format printer is introduced.
- 2018 ● The Canon Eco Technology Park opens to serve as a focal point of environmental activities.
- The software training facility Canon Institute of Software Technology is opened.
- Canon makes BriefCam Ltd. (Israel), a leading video analytics software developer, a wholly owned subsidiary.
- Canon launches a joint research project with the National Institutes for Cultural Heritage for the creation and use of high-resolution facsimiles of cultural properties.
- Canon introduces the EOS R System of full-frame mirrorless cameras, newly developed lens mount, and RF lenses.
- 2019 ● The instant camera printer IVY CLIQ+ ZV-123 is introduced.
- Fujio Mitarai is appointed chairperson of the Expo '90 Foundation.
- Canon Medical introduces the world's first MRI system featuring noise reduction reconstruction technology that utilizes deep learning.
- The native 4K laser projector REALiS 4K6021Z is introduced.
- Joint research begins with the Center for iPS Cell Research and Application, Kyoto University.
- Tomo-e Gozen, an astronomical observation system at Kiso Observatory, University of Tokyo, equipped with Canon's ultra-high sensitivity CMOS sensors, begins full operation.
- EOS series camera production reaches a total of 100 million units.
- The 8K broadcast lens UHD DIGISUPER 51 is introduced.
- Canon invests in the Japanese Organization for Medical Device Development.
- Development of video analytics technology for counting people in crowds.



RV1100



Fujio Mitarai



Masaya Maeda



AXIS Q1659



FPA-1200NZ2C



EOS R



IVY CLIQ+ ZV-123 / Zoemini S ZV-123



MRI system utilizing deep learning



REALiS 4K6021Z



Fujio Mitarai

2020s
Achieving grand strategic transformation

- 2020 ● Océ corporate name is changed to Canon Production Printing.
- The ME20F-SH ultra-high sensitivity multi-purpose camera is the recipient of the 71st Annual Technology & Engineering Emmy® Awards.
- Fujio Mitarai is appointed president, in addition to chairman and CEO, of Canon Inc.

- 2021 ● Canon develops the world's first 1-megapixel SPAD image sensor.
- Canon develops VisualSLAM technology and enters the mobile robot market.
- Remote network camera system that controls multiple cameras for video production is introduced.
- Fujio Mitarai is appointed president of the Scout Association of Japan.
- Canon introduces the full-frame mirrorless camera EOS R3 featuring a back-illuminated stacked CMOS sensor.
- Canon Medical starts joint research with National Cancer Center Japan for the development of photon-counting CT systems.
- Canon makes Redlen Technologies (Canada), a leader in X-ray imaging and detection, a wholly owned subsidiary.
- The EOS VR System for capturing VR video is launched.
- The Canon Group Human Rights Policy is established.
- The PowerShot PICK, a camera that controls recording processes and shoots automatically, is introduced.
- Canon Medical launches a CT diagnostic system featuring Precise IQ Engine (PIQE), a super-resolution reconstruction technology that utilizes deep learning.
- The world's first large-format printer GP series featuring aqueous fluorescent pigment inks is introduced.
- Canon develops a 3.2-megapixel SPAD sensor.
- 2022 ● Canon Optron develops oxide electrolytes.
- Canon Production Printing makes Edale (U.K.), a manufacturer of label and packaging presses, a wholly owned subsidiary.
- Lithography Plus, a solution platform that improves the efficiency of operating semiconductor lithography equipment, is introduced.
- AI Accelerator AS-AN11, which adds AI features/functions to Axis network cameras, is introduced.
- 2023 ● Canon Healthcare USA, Inc. (U.S.A.) is established.



EOS R3



RFS.2mm F2.8 L DUAL FISHEYE for VR shooting



PowerShot PICK (PowerShot PX)



CT system with super-resolution reconstruction technology



3.2-megapixel SPAD sensor

For details on Canon's history, scan the QR code



PRIMARY CANON GROUP PRODUCTS

Printing

Unless otherwise specified, printing/copying speeds are for single-sided printing on A4 paper.

Continuous Feed Presses



ProStream 3000

- High production color web-fed press for commercial print and graphic arts
- IJ versatility, offset quality on coated/uncoated media up to 133 m/min.



ColorStream 8000 series

- High production color continuous feed press for books, mailings, etc.
- Inkjet versatility, offset quality on uncoated paper up to 160 m/min.

Sheet-Fed Presses



varioPRINT iX-series

- High production sheet-fed inkjet press
- iQuarius[™] technologies for high quality on wide range of media



imagePRESS V1350

- High production color press for wide-variety printing
- Quick turnaround, stable, reliable, durable. Output of 135 pages/min. (A4)

Solutions Software



PosterArtist for WEB

- For easy creation of posters and flyers
- Various templates for a wide range of applications



uniFLOW Online

- Scanned information is directly uploaded to the cloud service
- Personal authentication reduces data leakage risks

Image Scanners



CanoScan LiDE 400

- Flatbed scanner with high-speed scanning capabilities
- One-touch uploading of data to the cloud for storage

Presenters



PR5000-C

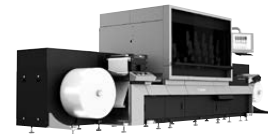
- Ring-type page clicker for easy page flipping via Bluetooth and USB
- Made with anti-bacterial material

Label Presses



imagePRESS V1000

- Color production press for short-run, wide-variety printing
- High productivity for various printed materials with versatile paper support



LabelStream 4000

- Industrial-scale UV inkjet label press (WCMYKO) with exceptional white
- Output of 1,845 m²/hour in digital and hybrid configurations

Large-Format Printers (Graphic Arts)



Colorado M series

- 64-inch modular UVgel roll-to-roll printers
- White ink (option), media versatility for high-quality large-format printing



Arizona series

- Large-format UV flatbed printers featuring VariaDot imaging technology
- Roll-to-roll media (option)
- Hard media up to 50.8 mm thick

Calculators



HS-1200TC

- Slim design 12 digits desktop calculator
- Anti-bacterial agents applied

Cable ID Printers



MK5000/MK3000

- Prints ID on wires, tubes and power distribution panels
- Max. print speed 55 tubes/min.¹

Color Label Printers



LX-D5500/LX-P5510 (LX-D5500/LX-P5500)

- Dye-based ink model for vibrant color labels; Pigment-based ink model for durable labels
- High-speed, full-color on-demand printing up to 200 mm/sec. (with LX-D5500)

Color Card Printers



CX-G6400/IX-R7000

- Suitable for different media ranging from paper to plastics
- High-speed printing of up to 100 cards/min.²

Large-Format Printers



imagePROGRAF TC-20

- Canon's first desktop 24-inch large-format printer
- Space-saving design and office-like usability of drawing printing for WFH



imagePROGRAF GP-4000

- 44-inch model, wide color gamut with aqueous fluorescent pigment ink
- "Radiant Infusion" technology allows the fluorescent ink to be layered with other inks on the paper surface for bright and vivid colors



ColorWave 3000 series

- 42-inch model featuring 4 color TonerPearls
- Utilizes patented technology for jetting solid gel toner



imageRUNNER ADVANCE DX C5870i

- A3 color multifunction device (70 ppm in color and black-and-white)
- Improved shorter warm-up time, low power consumption, quietness

Imaging

Network Cameras



VB-H47

- High-performance PTZ model with 20x optical zoom lens
- Outstanding low-light performance; features WDR function



VB-S32VE

- Compact PTZ model designed for outdoor use
- Built-in-microphone enabling audio recording



AXIS P4707-PLVE Panoramic Camera

- 2x5 MP dual-sensor with 360° IR
- Both sensors support analytics powered by deep learning



AXIS P1468-LE Bullet Camera

- Fully-featured, all-around 4K surveillance
- Analytics powered by deep learning

Laser Multifunction Devices



imageRUNNER ADVANCE DX 4845i

- A3 black-and-white multifunction device (45 ppm)
- Industry-leading low power consumption and reduced unit weight



Color imageCLASS MF750 series (i-SENSYS MF750 series)

- A4 color multifunction device (33 ppm for color and black-and-white)
- Fast one-pass two-sided ADF scanner for efficient reception work

Laser Printers



LBP360 series

- A4 black-and-white laser printer (71 ppm)
- High production with high-speed and high-volume paper feeding

Inkjet Printers



GX4000 series

- Multifunction printer with high-volume refillable pigment ink tanks
- High-quality business printer with low operation cost and small footprint

Multi-Purpose Cameras



ML-105 EF/ML-100 M58

- Ultra-high-sensitivity CMOS sensor records color video in low light
- Compact design and environmental resistance meeting various standards

Video Content Analytics Software



Crowd People Counter for Milestone XProtect

- Counts thousands of people in real time
- Possible to specify and count multiple areas



AI Accelerator AS-AN11

- MicroSD card type accelerator adds AI functionality to AXIS network cameras (Japanese market only)



Vision-based Navigation Software

- Video content analytic software for mobile robots
- Spatial position detection using stationary objects as markers

Compact Photo Printers



G3070 series

- Entry-level inkjet multifunction printer with extra-large MegaTank
- Low-cost, high-productivity support for home workers and students



TR150

- Compact, lightweight mobile printer for printing on the go
- 5 GHz compatible Wi-Fi connection



IVY 2 PV-223 (Zoemini 2 PV-223)

- Mini photo printer for photo sticker printing of images shot by smartphones
- Bluetooth connection and dedicated app enable editing of photos

Printable Contents Site



Creative Park

- Free downloadable paper crafts
- Available for smartphones and PCs

Video Management Software



BriefCam Video Analytics Platform

- Search, alert on, and visualize video metadata for enhanced investigations, situational awareness, and operational insights from video

Video Surveillance as a Service



Milestone XProtect[®]

- Industry-leading video management software based on a true open platform
- Compatible with a wide range of systems



Arcules VSaaS

- Monitor and control multiple sites from secure web portal with enterprise-grade video
- Hosted subscription model reduces cost and complexity

Infrastructure Inspection Service



Infrastructure Inspection Service

- Cloud service using AI image detection technology for infrastructure inspection of cracks and other defects of bridges, tunnels, etc.

1: When printing 5 two-byte characters (3 mm width) on a 20 mm tube. 2: When printing JIS standard size business cards and plastic cards on CX-G6400.

PRIMARY CANON GROUP PRODUCTS

Industrial Software



- Vision Edition 2**
- Video analytics software for automation of inspection, logistics, etc.
 - Enables recording and notifications by connecting cameras, tablets, etc.

MR Systems



- MREAL X1**
- Largest display area in the MREAL series
 - Better verification efficiency, life-like graphics promote DX for industry



- MREAL S1**
- Highly immersive experience compared to VR
 - Offers various simulation methods by way of life-sized, real-time high-quality 3D-graphics

Interchangeable-Lens Digital Cameras



- EOS-1D X Mark III**
- High-speed continuous shooting of up to 20 fps, high-precision AF
 - Wireless connectivity and enhanced operability for professionals

Binoculars



- 10x20 IS**
- Compact, lightweight model for portability and high performance
 - Shift-System Image Stabilizer using EF lens optical technology

Vapor Deposition



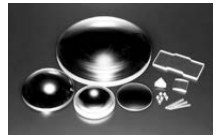
- SURFCLEAR300**
- Fluoride coating enables easy removal of water and oil-based stains
 - High-class wear resistance and durability

Oxide Electrolytes



- Oxide Electrolytes**
- High conductivity and can be sintered at low temperature
 - Possesses atmospheric stability

Optical Crystals



- Fluorite (CaF₂)**
- Excellent optical characteristics including low dispersion and anomalous dispersion
 - Used in EF lenses and broadcast lenses

Mirrorless Cameras



- EOS R3**
- High sensitivity and high-speed shooting of max. 30 fps with AF/AE tracking
 - Back-illuminated stacked 35 mm full-frame CMOS sensor



- EOS R5**
- Approx. 45MP image quality, 20 fps continuous high-speed shooting
 - World-first¹ 8K recording and 8.0-stop image stabilization for comfortable shooting



- EOS R50**
- Realizes high image quality in a compact and lightweight body
 - Auto function enables beginner vloggers to shoot movies and still images

VR System



- EOS VR SYSTEM**
- Enables high-quality stereoscopic 3D 180° VR shooting
 - Supports efficient workflow from shooting to editing for video production

Medical

CT Systems



- Improves workflow by capturing images of the heart in a single rotation
- AI-based image reconstruction to produce sharper images at lower radiation dose

Diagnostic Ultrasound Systems



- High-performance cardiovascular diagnostic imaging system
- iBeam architecture supports high-quality examinations

Diagnostic X-ray Systems



- For examination of chest and abdomen cavities and full-body skeletal exams
- Auto-positioning technology for automated positioning with one action

MRI Systems



- MRI featuring AI-based noise reduction reconstruction technology²
- High-resolution and accelerated image acquisition

Interchangeable Lenses



- RF/EF Lenses**
- Broad lineup, from ultra-wide angle to super telephoto, for use with EOS series cameras
 - High image quality achieved by superior optical technology

Digital Compact Cameras



- PowerShot G7 X Mark III**
- Premium model with livestreaming capabilities
 - Featuring 4K and vertical video shooting

New Concept Cameras



- PowerShot ZOOM**
- New telephoto concept camera integrating "viewing" and "shooting"
 - Palm-size telephoto camera with 100 mm/400 mm optical zoom

VR System



- PowerShot PICK (PowerShot PX)**
- Automatically recognizes and tracks subjects; composition can be adjusted
 - Compact, lightweight body (approx. 170 g)

PET/CT



- Digital Time-of-Flight technology for improved diagnostic details
- 780 mm-wide bore offers a spacious feeling for a better patient experience

Clinical Laboratory Systems



- Offering fast and efficient sample processing
- Class-leading test bottle capacity for multi-item testing

Rapid Antigen Test Kit (Qualitative)



- Detects SARS-CoV-2 without low cross-reactivity between SARS-CoV-2 and other viruses
- Highly sensitive technology detects minute virus amounts in just 15 minutes

Novel Coronavirus RNA Detection Reagent



- Genetic detection reagent based on the fluorescent LAMP method
- Rapid, highly sensitive virus detection

Online Services



- image.canon**
- Cloud platform that connects with camera
 - Images can be transferred to PCs, smartphones and other web services

Compact Photo Printers



- SELPHY CP1500**
- High-quality prints with superb durability
 - Easy printing via simple connection to smartphones and PCs

Digital Cinema Cameras



- EOS R5 C**
- Full-frame 8K/60P internal RAW recording
 - Equivalent to EOS R5 still performance in resolution and speed

Digital Camcorders



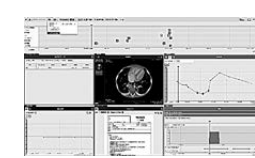
- XF605**
- Professional 4K camcorder featuring high mobility and connectivity
 - High-quality 4K/60P 4:2:2 10-bit HDR recording

X-ray Imaging Systems



- Fluoroscopy for medical examinations, procedures, and treatment
- Clear and high-resolution fluoroscopic images with reduced dose

Medical Information Solutions



- Chronologically integrates patient treatment and examination information
- Produces optimal information arranged by doctor and treatment

Digital Radiography



- Supports wide range of general radiography from rad room to mobile exams
- Real-time detection to optimize X-ray exposure dose

AI Noise Reduction Technology



- Proprietary AI technology reduces image noise by up to 50%
- Real-time processing without disrupting conventional workflow

EF Cinema Lenses / Broadcast Lenses



- CN8x15 IAS S**
- Outstanding optical performance with wide angle (15 mm) and high magnification ratio (8x zoom)
 - Built-in 1.5x extender for telephoto range; full coverage for full frame sensors

4K Professional Displays



- DP-V2730**
- Professional 27-inch 4K HDR display
 - HDR compatibility with wide color gamut, wide viewing angle and expressive blacks

Projectors



- 4K6021Z**
- Smooth, high-quality, real 4K images with less "grid" pattern
 - 4K/60P image projection with rich gradation

Remote Cameras



- CR-N700**
- Flagship indoor 4K/60P HDR remote camera
 - Accurate autofocus featuring subject recognition with eye/head detection

Ophthalmic Equipment



- For tomographic images of the fundus, with wider and deeper range
- Wide-angle OCTA with noise reduction AI processing for high image quality

X-ray Tubes



- Compact ultra-high cooling X-ray tube using liquid-metal bearing technology
- High-power large focal spot, high-definition small focal spot, low dose

X-ray Image Devices



- High-quality X-ray images achieved by superior phosphor and beam focusing
- Contributing low-dose operation for mobile C-arm X-ray system

Microwave Tubes



- Compact and efficient radiotherapy equipment components for cancer treatment using PPM permanent magnets

1: Among digital ILCs as of July 8, 2020 (Based on a Canon survey).

2: The system itself does not have a self-learning function.

PRIMARY CANON GROUP PRODUCTS

Industrial / Others

Semiconductor Lithography Equipment

Featuring fast and accurate wafer maneuvering stages and ultra-high-precision wafer positioning technologies.



- FPA-6300E56a**
- Super-high throughput of 300 wafers/hour¹ or more
 - Designed for mass production of memory, logic and image-processing devices



- FPA-5550iZ2**
- i-line stepper with highest-class productivity² and excellent alignment precision
 - Flexibly supports a wide variety of processes

FPD (Flat Panel Display) Lithography Equipment

Exposes micrometer-scale pixel circuits on glass substrates to support high-definition smartphones and large TV panels.



- MPAsp-H1003H**
- High-resolution and productivity for Generation 8 glass substrates
 - Ability to manufacture from high-definition IT panels to 65-inch panels

Solutions for Lithography Equipment

Raises throughput of lithography equipment by combining manufacturing data and Canon's know-how.



- Lithography Plus**
- Maximizes productivity of semiconductor lithography equipment
 - Optimizes manufacturing settings; provides data of system operation status

Contact Image Sensors

Image reading device used in image scanners and other products.



- Contact Image Sensors**
- Image reading sensor unit that includes lenses and sensor IC
 - Accurate scanning for banknote readers and industrial flaw detection

Handy Terminals

Contributes to the efficiency of mobile businesses conducting meter readings, route sales and more.



- GT-50**
- Supports Windows 10, enabling use in various businesses
 - Equipped with large 5-inch LCD color touch panel display

Payment Terminals

Enables on-the-spot payment anytime and anywhere.



- CA-P1**
- Payment terminal with printer
 - Handles various payment methods such as credit cards and electronic money

TAB Flexible Boards

Printed wiring of electric/electronic circuits on flexible boards.



- TAB Flexible Boards**
- Supports both mass-volume and wide-variety, small-lot production
 - For production of fine, high-density, flexible printed-wiring boards

OLED Panel Manufacturing Equipment

Mass-produces smartphone and television display panels with vacuum deposition technology.



- System-ELVESS**
- Manufactures high-resolution display panels with vacuum deposition through mask
 - Manufactures versatile panels in terms of panel sizes and types of final products

MRAM Sputtering Equipment

Mass produces next-generation magneto-resistive random-access memory (MRAM).



- NC7900**
- Achieves 200% MR ratio³ for perpendicular MTJ⁴
 - High throughput of 20 wafers/hour or more

Atomic Diffusion Bonding Equipment

Mass production wafer bonding equipment that ensures high bonding strength under ultra-high vacuum.



- BC7000**
- Auto vacuum operation for transfer, deposition, bonding and collection
 - High bonding strength at room temperature and zero pressure

Die Bonders

Bonds IC chips onto lead frames with high speed and accuracy.



- BESTEM-D540**
- Capable of handling 12-inch wafers for power devices
 - Suitable for automotive devices with high-quality solder bonding

Digital Galvano Scanners

Used for high-precision laser scanning in such devices as laser markers and 3D printers.



- GM Series**
- Realizes high position repeatability using Canon's high-precision encoder and proprietary digital control technologies
 - Mirrors and drivers selectable according to various laser processing needs

Precise Laser Drilling Scan Systems

Enables a variety of micro processing with non-thermal ablation process of ultra-short pulse laser.



- MA-1010 Series**
- Wide range of output angles; high processing speed; proprietary optical technology
 - Flexible processing position and angle shift

Air Bearings

For use in semiconductor manufacturing equipment.



- Air Bearings**
- High stiffness, damping and load capacity keeps semi-permanent high rotation accuracy
 - Enables production of spindles with built-in motors

Pressure Sensitive Sensors

Easily detects pressure changes in real time.



- Low Pressure Sensitive Sensors**
- Responds to slight forces such as pressure in clothing fitting and pulsation
 - Features newly developed electroconductive paint

Coining Equipment for Substrates

Presses materials to flatten solder bumps on circuit boards with high precision.



- HPM-45000**
- Automatic head leveling to reduce height deviation
 - Capable of high load and high precision due to miniaturization and higher density of solder bump

Compact 3D Machining Centers

High-precision 3D machining in a compact, space-saving design.



- MF-150A Mark II**
- Improved algorithm realizes shorter production times
 - 100 V power source enables operation in any location

Small Injection Molding Machines

Provides layout-free inline molding capability.



- LS-300/LS-715/ML-100**
- Compact design, low energy and material consumption
 - Dedicated cassette molds facilitate quick changing and processing

Dental Milling Machines

High-speed, high-precision operation achieved through application of industrial machining technology.



- MD-500**
- Compact and high rigidity
 - Easy usability designed for daily operation

Non-Contact Displacement Sensors

Non-contact, high-precision measurement of the speed and displacement of an object.



- PD series**
- Able to track high-speed, high-acceleration objects (up to 10 m/sec., 100G)
 - Use of LED light for easier installation regardless of laser class

Laser Doppler Velocity Sensors

Non-contact measurement of an object's speed and speed irregularities from a stationary state.



- S-100Z/PV-01**
- Separate optical sensor from signal processing unit for light, compact body
 - Built-in counter for length measurement

Capacitance Diaphragm Gauges

High-precision vacuum gauges for stable pressure measurement over long periods.



- M-342DG**
- High-precision and stable pressure measurement
 - Compact and low power consumption

3D Machine Vision Systems

Acquires 3D information of parts for automated parts supply on a product line.



- RV1100/500/300**
- Realizing high-speed and high-accuracy 3D recognition of parts
 - Setting up with compact and lightweight body easily supporting IP54 compliance

Food Waste Decomposers for Business Use

Significantly reduces garbage mass using hybrid biochemical and drying process method.



- Land care 16 II**
- Can handle continuous garbage disposal, similar to a trash can
 - Hygienic automatic bagging function

Satellites

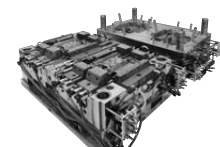
Pursuit of mass production of high-quality satellites with short delivery times.



- Space Telescopes**
- Super-telephoto optical system for high-resolution photos of Earth and outer space
 - Customizable for various purposes

Injection Molds

Supports mass production of plastic products and components in such industries as automotive and medical.



- Injection Molds**
- Precision injection molds that achieve high durability and high productivity
 - Custom manufacturing of technically difficult molds

CMOS Sensors

Advanced image sensors that are the core devices in digital cameras.



- LI5030**
- Equipped with a global shutter
 - 19 MP, 58 fps shooting, high sensitivity/image quality, 6.4 μm pixel size

Energy-Efficient Cryopump

Used for vacuum exhaust in semiconductor and electronic device manufacturing equipment.



- POWEReco Series**
- High energy savings from reduced power consumption and water needed for cooling
 - Lower regeneration time

Document Scanners

A key information input device for quickly digitalizing documents.



- DR-G2140**
- Fast, clear scanning, flexible paper feed, new image processing function
 - High-end model with A3 paper support

Mobile Printers

For various printing needs anywhere, even outdoors.



- BP-F400**
- Compact and lightweight: 254 mm (W), 55 mm (D), 30 mm (H) (approx. 580 g)
 - A4-size thermal paper printing

Light-and-Speakers

Spot lighting and high fidelity sound for a deep and immersive experience.



- Light-and-Speaker**
- 360° surround experience of clear, rich sound
 - Arm and light can be moved smoothly with one hand

1: 300 mm wafers, 96 shots, with Grade 10 options applied. 2: Among same-class i-line steppers. As of December 14, 2016 (Based on a Canon survey). 3: Magneto ratio. Refers to the change in ratio of magnetic resistance. 4: Magnetic Tunnel Junction. The magnetic resistance of components changes due to the Tunnel Magneto-Resistance (TMR) effect.

● Some products in this publication may not be available in certain regions.

Canon

CANON INC.

30-2, Shimomaruko 3-chome, Ohta-ku, Tokyo 146-8501, Japan

©Canon Inc. 2023 PUB.AEP047 0224